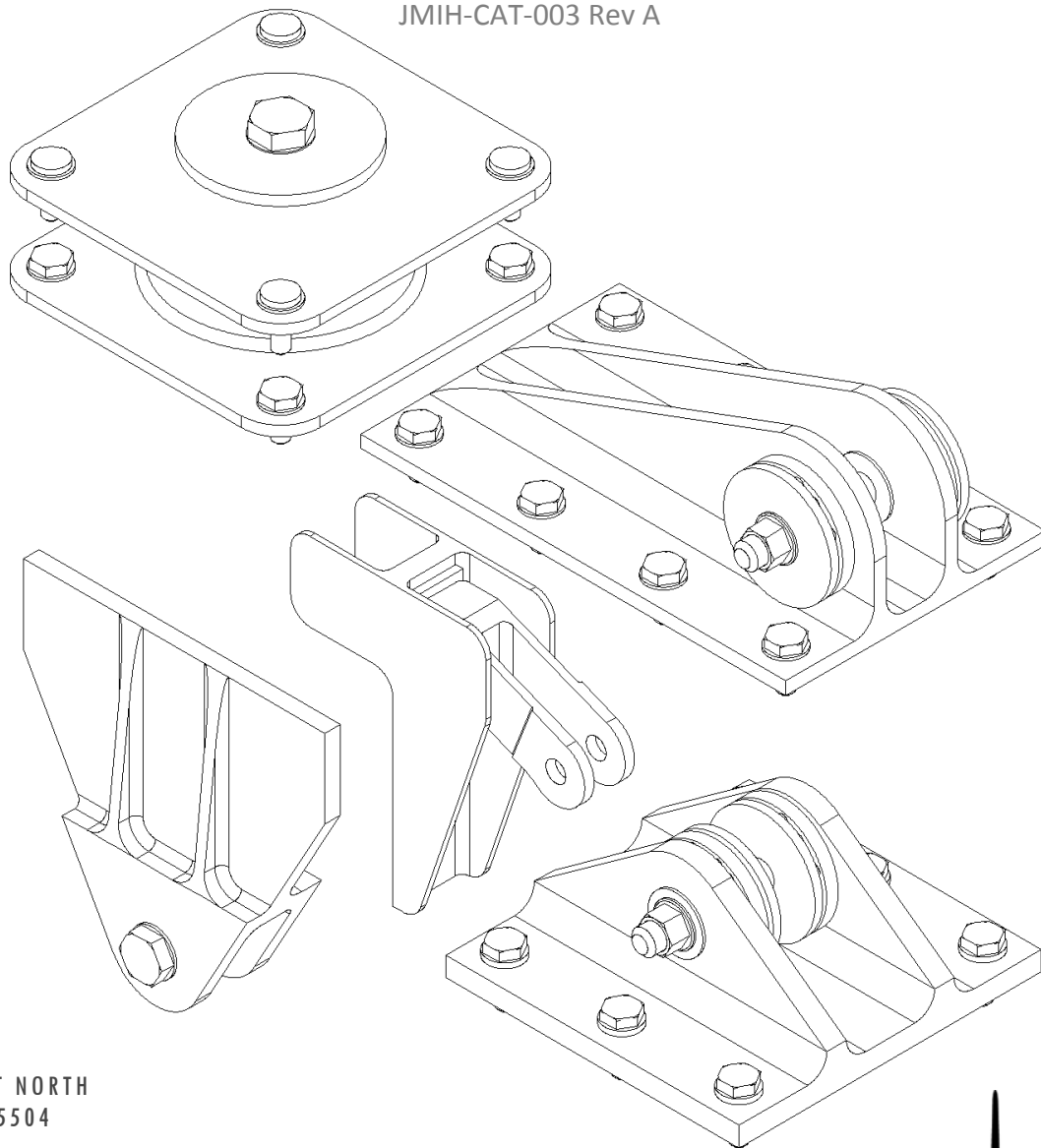


# STANDARD MONUMENT ATTACHMENT HARDWARE CATALOG

JMIH-CAT-003 Rev A



11221 69th STREET NORTH  
LARGO, FL 33773-5504  
727-549-9600

2670 EDMONDS LN #100  
LEWISVILLE, TX 75067-6728  
972-436-7069

JORMAC.COM



**JORMAC** AEROSPACE



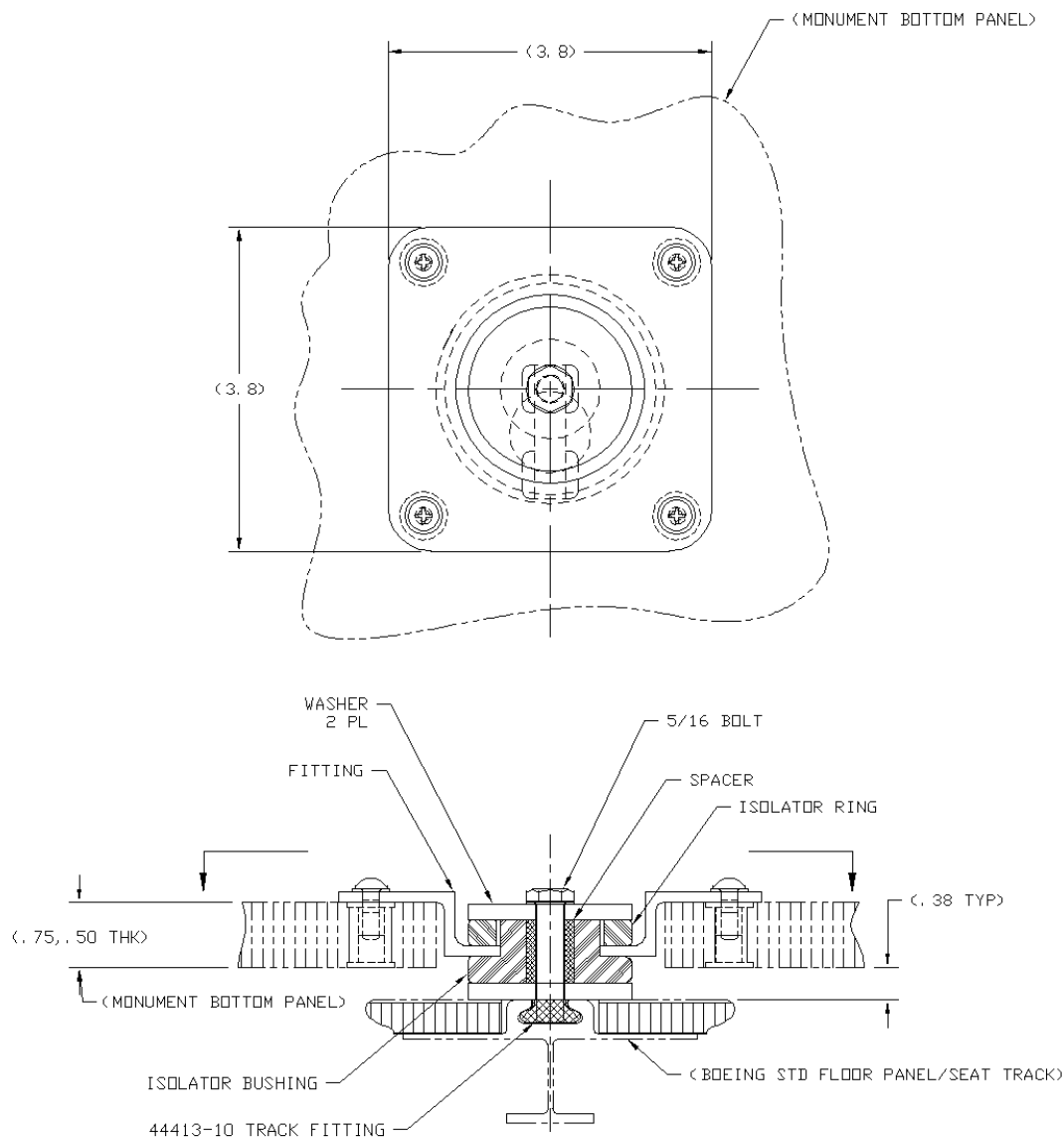
# INDEX:

Page

1. <a href="#"><u>Install Kit, Seat Track Mount, Isolated</u></a>	....1
2. <a href="#"><u>Install Kit, Floor Mount, Isolated</u></a>	....2
3. <a href="#"><u>Install Kit, Seat Track Mount, Round Fitting, Isolated</u></a>	....3
4. <a href="#"><u>Install Kit, Cabinet Attach, Isolated 3/4" Panel (Forward Restraint)</u></a>	....4
5. <a href="#"><u>Install Kit, Cabinet Attach, Isolated 1/2" Panel (Forward Restraint)</u></a>	....5
6. <a href="#"><u>Install Kit, Upper Partition Attach, Isolated , Reduced Capability</u></a>	....6
7. <a href="#"><u>Install Kit, Cabinet Attach, Isolated 1/2" Panel (Lateral Restraint)</u></a>	....7
8. <a href="#"><u>Install Kit, Cabinet Attach (Lateral Restraint)</u></a>	....8
9. <a href="#"><u>Install Kit, Lower Attach, Isolated (Side Ledge Cabinet)</u></a>	....9
10. <a href="#"><u>Install Kit, Lower Attach, Isolated (Side Ledge Cabinet)</u></a>	....10
11. <a href="#"><u>Install Kit, Upper Partition Attach, Isolated</u></a>	....11
12. <a href="#"><u>Install Kit, Upper partition Attach, Un-Isolated</u></a>	....12
13. <a href="#"><u>Install Kit, T-Rail Attach (Upper Side Ledge Cabinet Attach)</u></a>	....13
14. <a href="#"><u>Install Kit, T-Rail Attach (Upper Side Ledge Cabinet Attach)</u></a>	....14
15. <a href="#"><u>Install Kit, T-Rail Attach (Upper Ledge/ Closeout Attach)</u></a>	....15
16. <a href="#"><u>Install Kit, A/C Stringer Fitting (Forward Restraint)</u></a>	....16
17. <a href="#"><u>Install Kit, A/C Stringer Fitting, 757 Only High Strength (Forward Restraint)</u></a>	....17
18. <a href="#"><u>Install Kit, Partition Seat Track Attach, Isolated</u></a>	....18
19. <a href="#"><u>Install Kit, Partition Floor Panel Attach, Isolated</u></a>	....19
20. <a href="#"><u>Install Kit, Upper Cabinet Attach, Un-Isolated</u></a>	....20
21. <a href="#"><u>Install Kit, Upper Cabinet Attach (Adapter Bracket, Forward Restraint)</u></a>	....21
22. <a href="#"><u>Install Kit, Partition Attach, Stability Constraint 1" Panel</u></a>	....22
23. <a href="#"><u>Install Kit, Partition Attach, Stability Constraint 1" Panel</u></a>	....23



## Install Kit, Seat Track Mount, Isolated



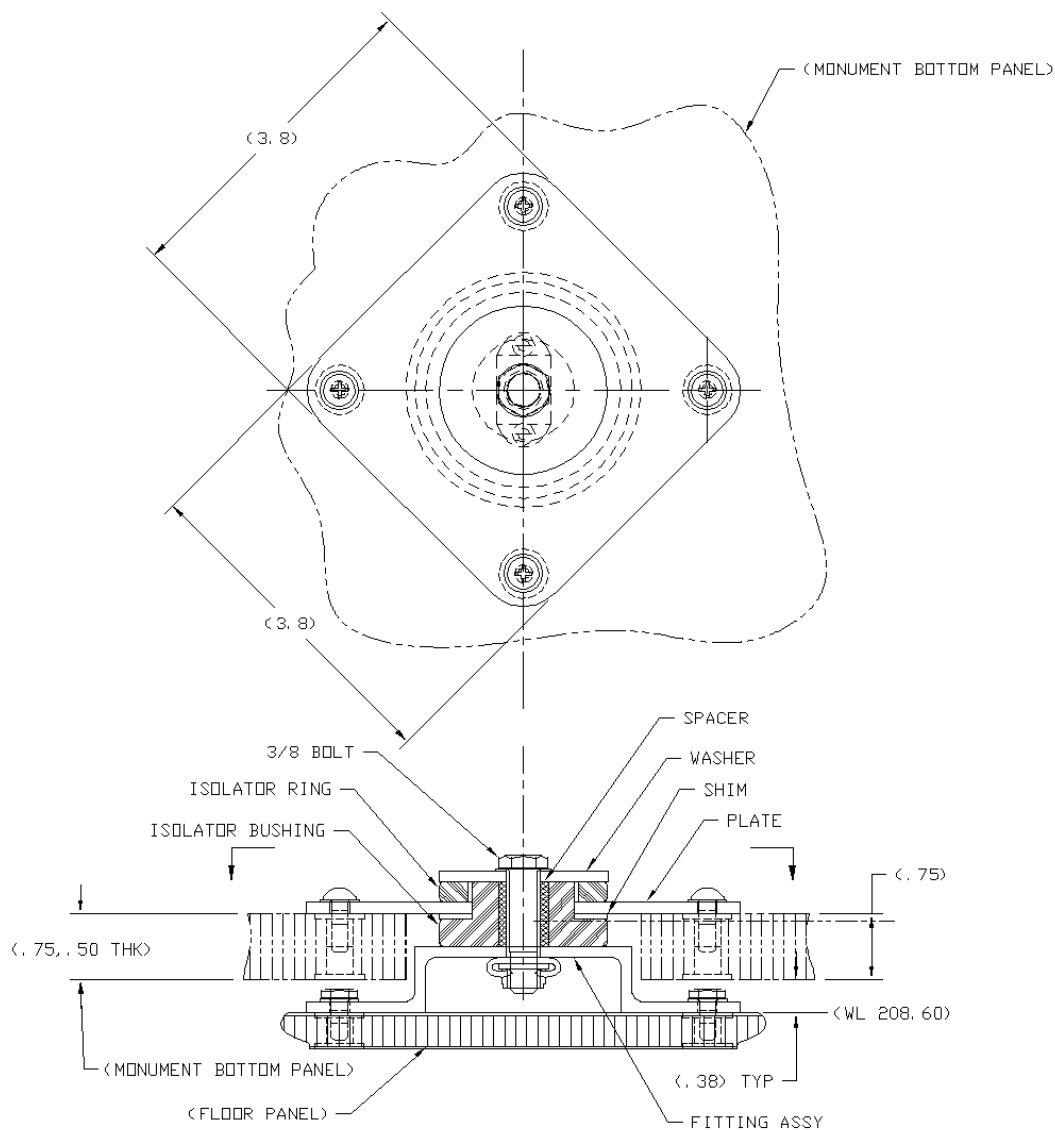
JMCS-010-010-001 INSTALL KIT, SEAT TRACK, ISOLATED .75 PANEL THICKNESS

JMCS-010-010-031 INSTALL KIT, SEAT TRACK, ISOLATED .50 PANEL THICKNESS

[BACK TO INDEX](#)



## Install Kit, Floor Mount, Isolated



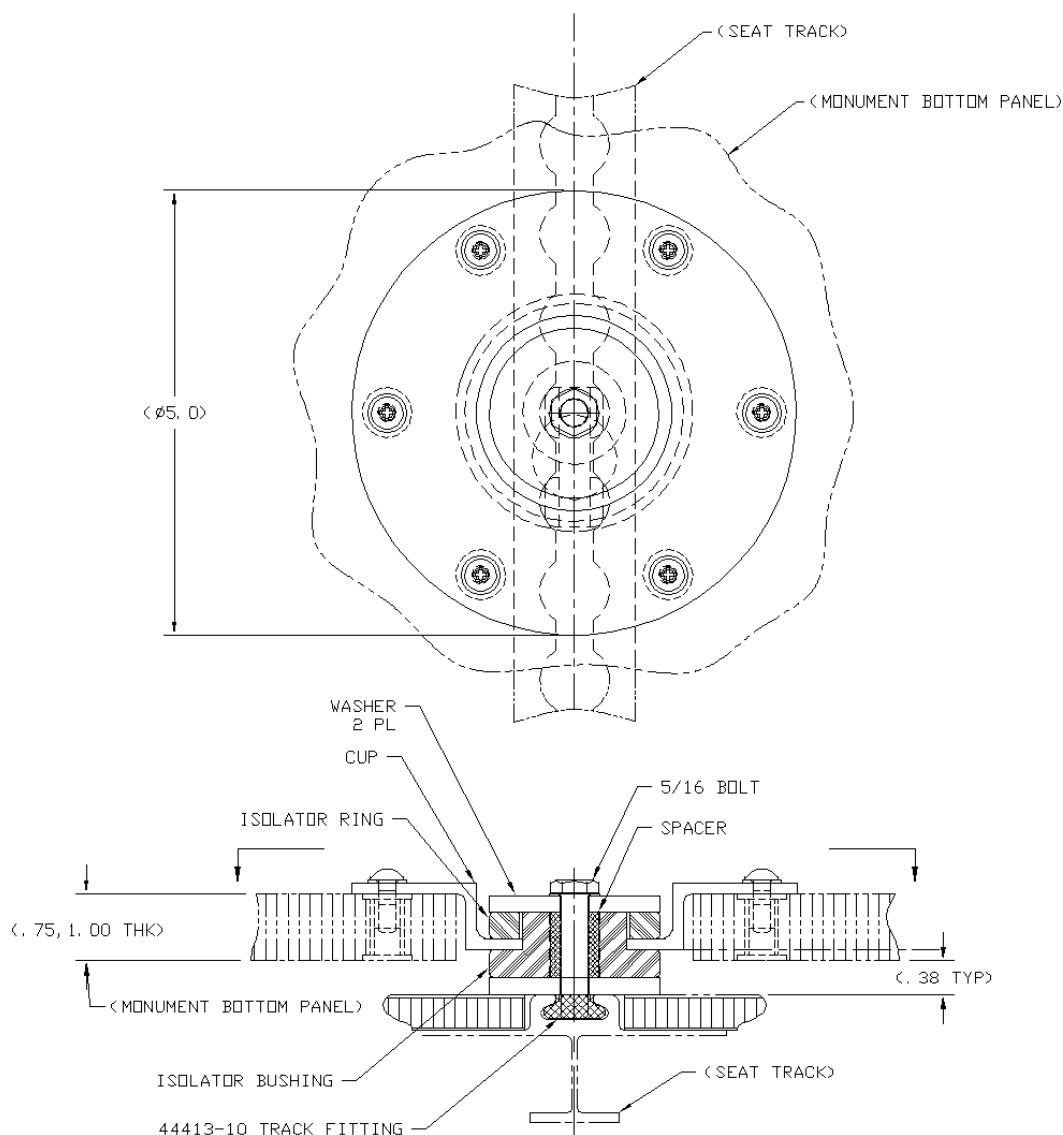
JMCS-010-010-003 INSTALL KIT, FLOOR PANEL, ISOLATED .75 PANEL THICKNESS

JMCS-010-010-033 INSTALL KIT, FLOOR PANEL, ISOLATED .50 PANEL THICKNESS

[BACK TO INDEX](#)



## Install Kit, Seat Track Mount, Round Fitting, Isolated



JMCS-010-012-001 INSTALL KIT, SEAT TRACK MOUNT, ISOLATED .75 PANEL THICKNESS

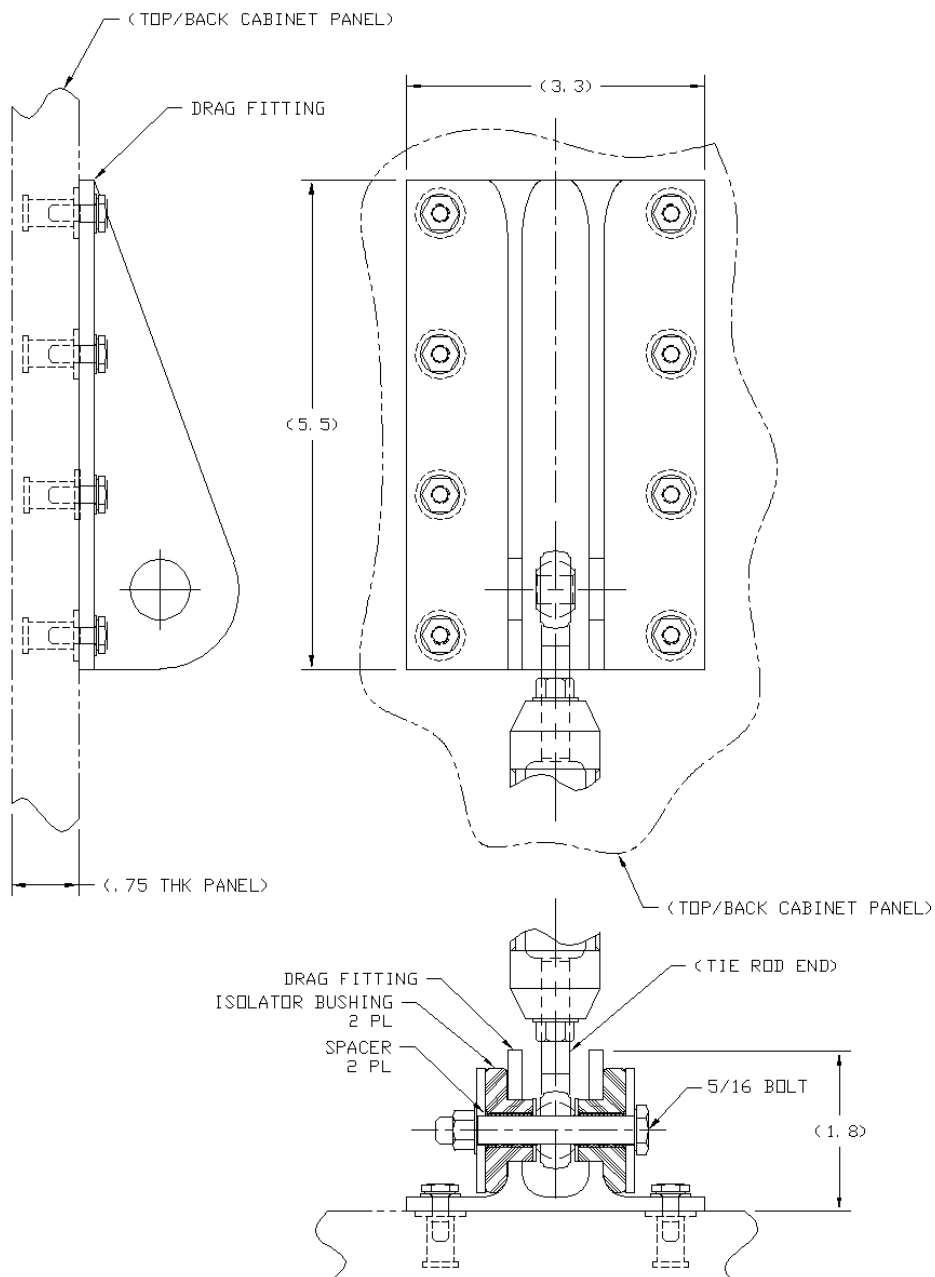
JMCS-010-012-003 INSTALL KIT, SEAT TRACK MOUNT, ISOLATED .50 PANEL THICKNESS

[BACK TO INDEX](#)



## Install Kit, Cabinet Attach, Isolated 3/4" Panel (Forward Restraint)

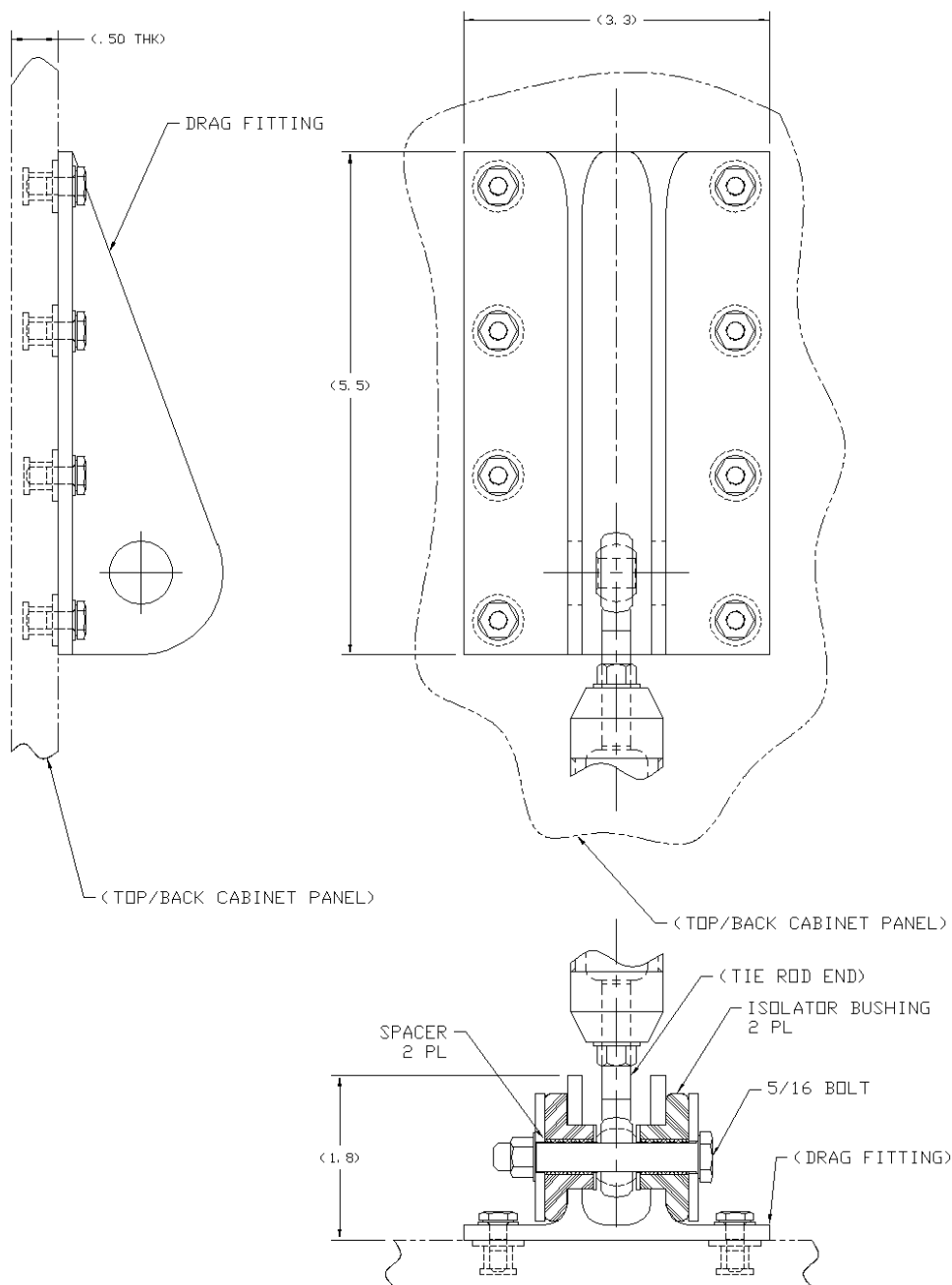
### JMCS-010-010-005



[BACK TO INDEX](#)



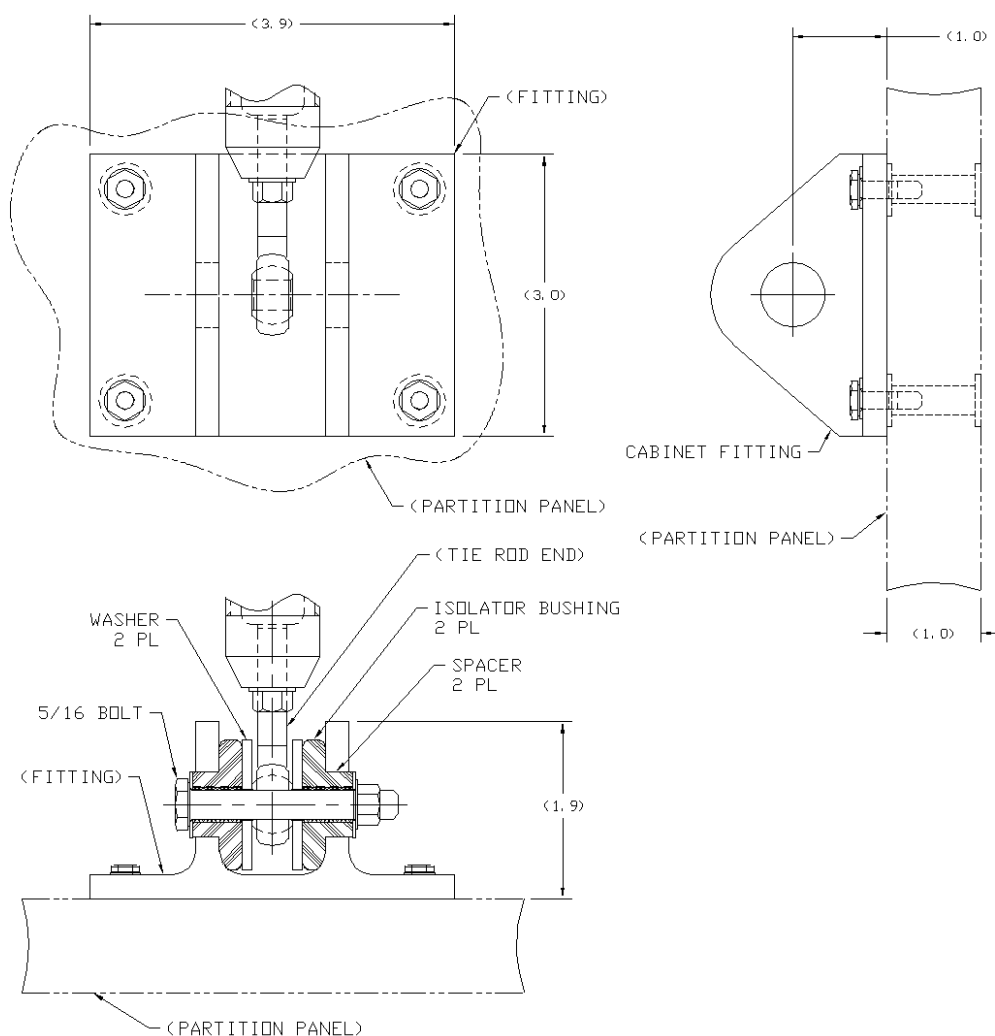
## Install Kit, Cabinet Attach, Isolated 1/2" Panel (Forward Restraint) JMCS-010-010-055



[BACK TO INDEX](#)



Install Kit, Upper partition attach, Isolated , Reduced capability  
JMCS-010-010-061

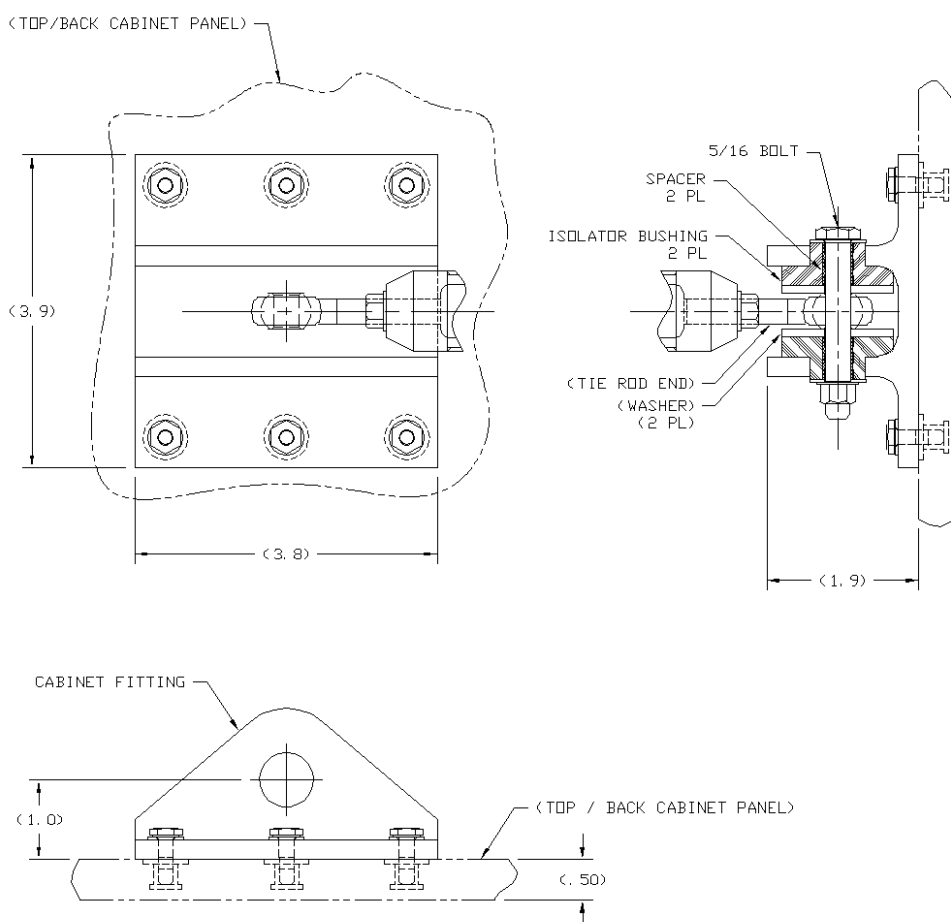


[BACK TO INDEX](#)





Install Kit, Cabinet Attach, Isolated 1/2" Panel (Lateral Restraint)  
JMCS-010-010-063

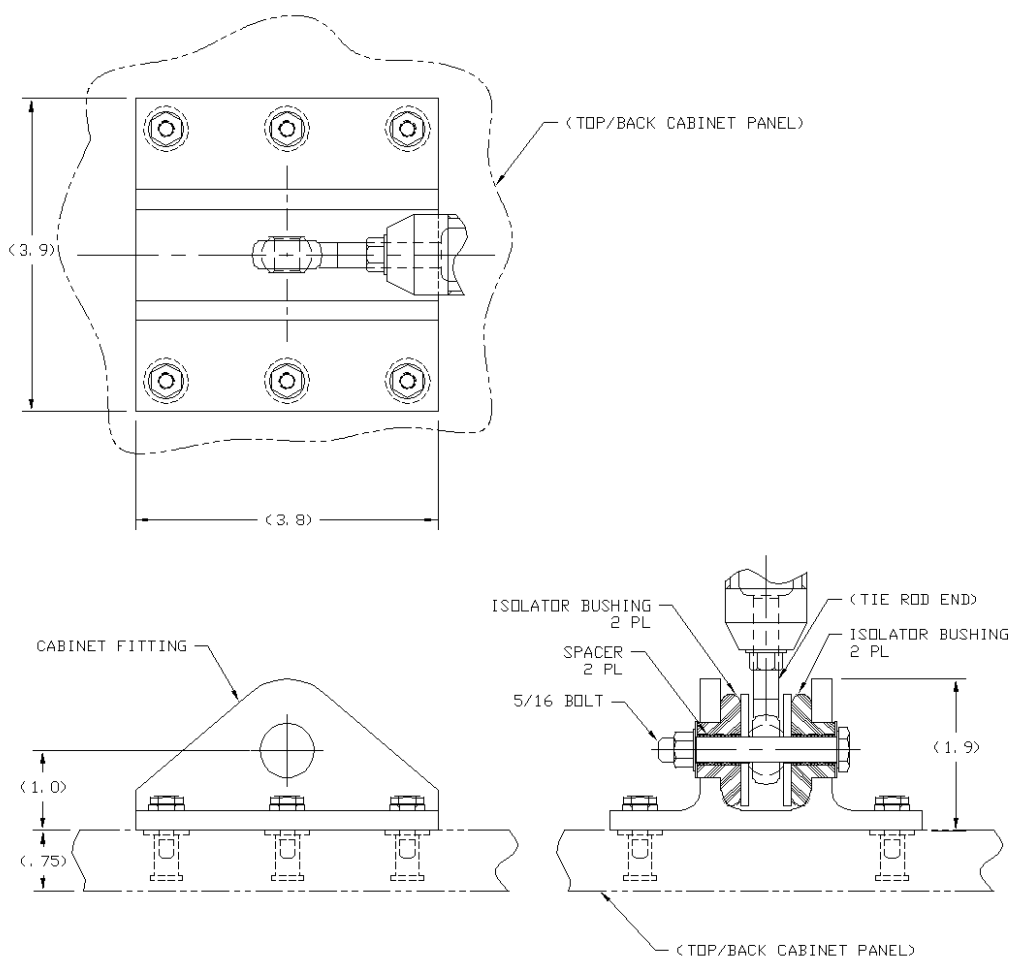


[BACK TO INDEX](#)



## Install Kit, Cabinet Attach (Lateral Restraint)

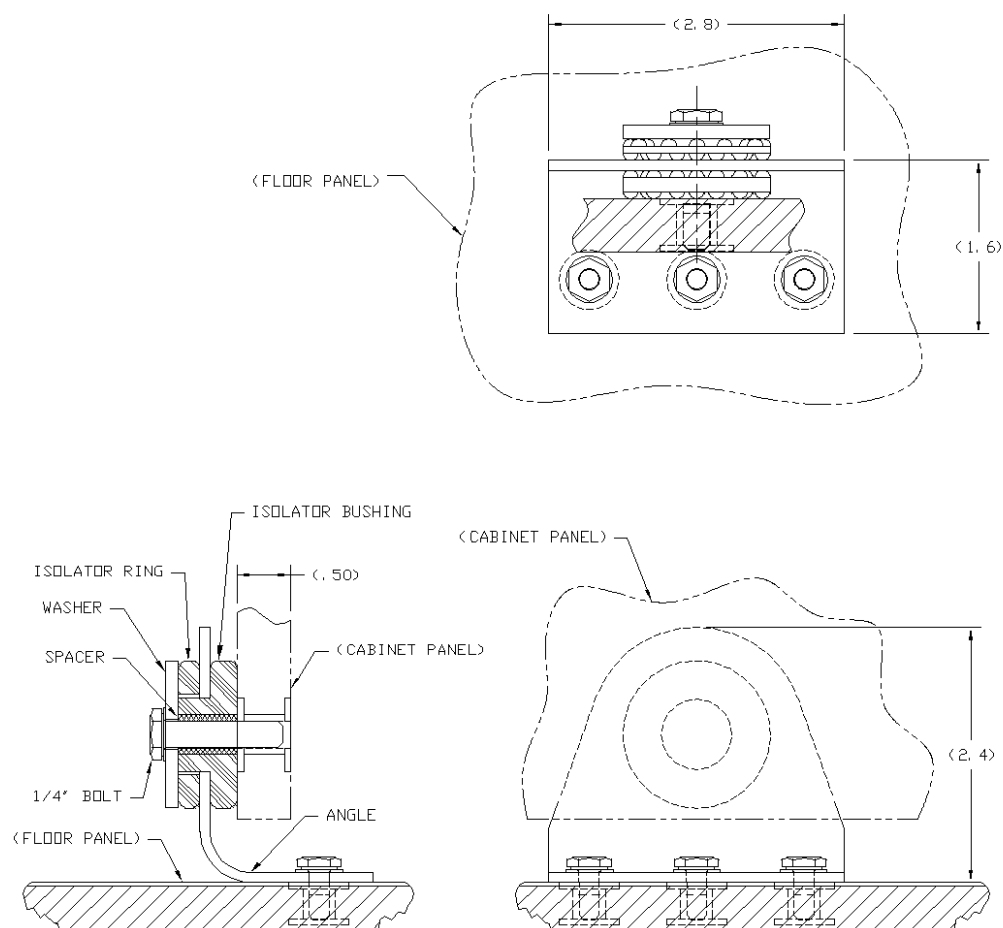
### JMCS-010-010-007



[BACK TO INDEX](#)



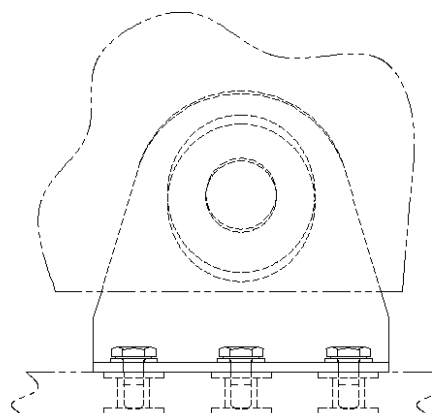
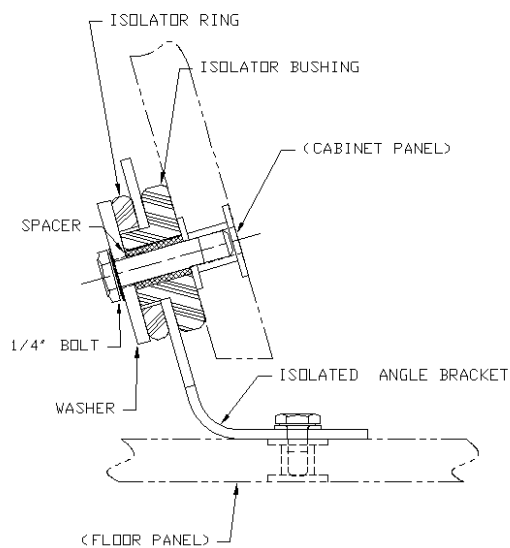
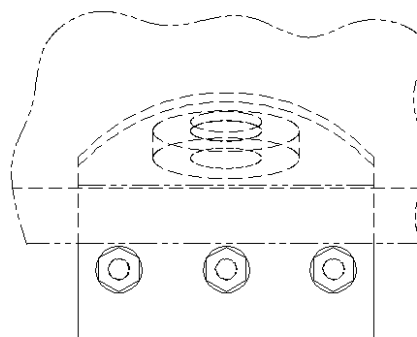
Install Kit, Lower Attach, Isolated (Side ledge Cabinet)  
JMCS-010-010-011



[BACK TO INDEX](#)



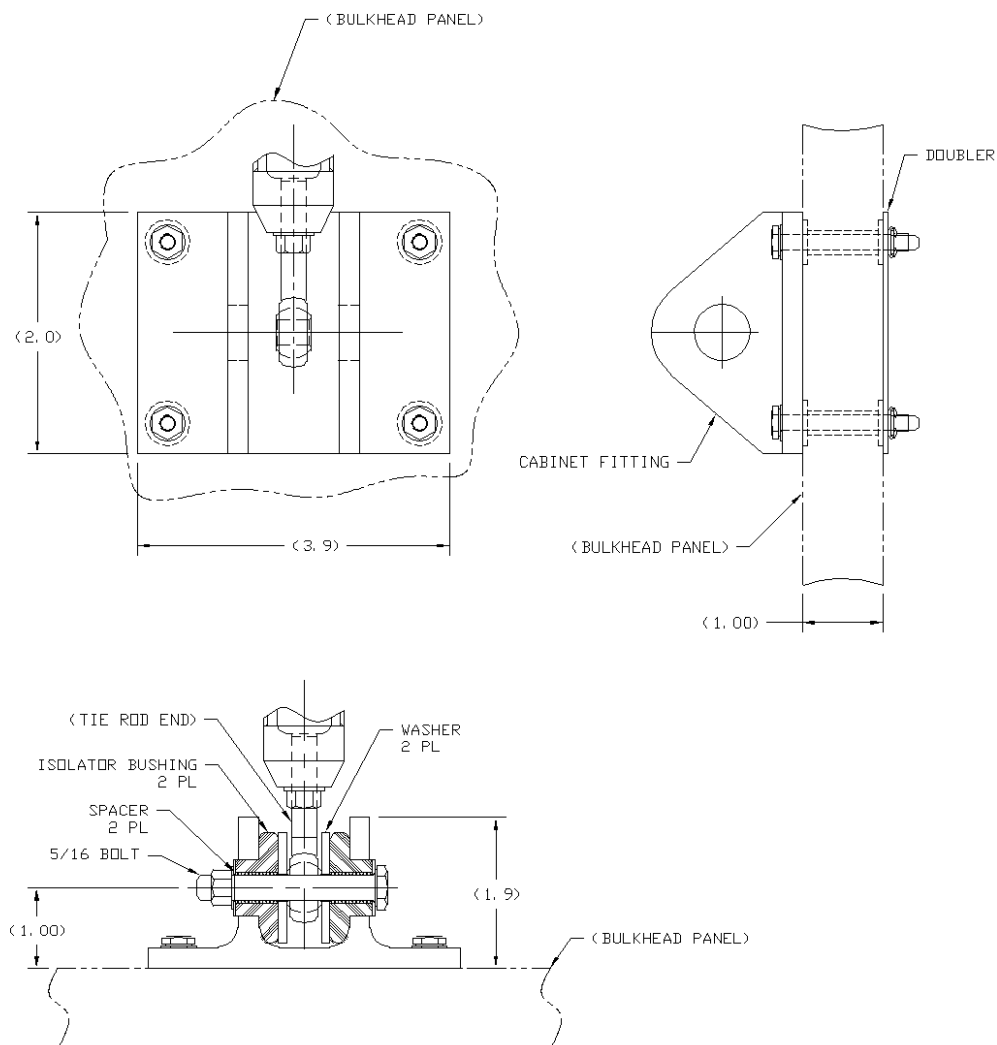
## Install Kit, Lower Attach, Isolated (Side Ledge Cabinet) JMCS-010-010-057



[BACK TO INDEX](#)



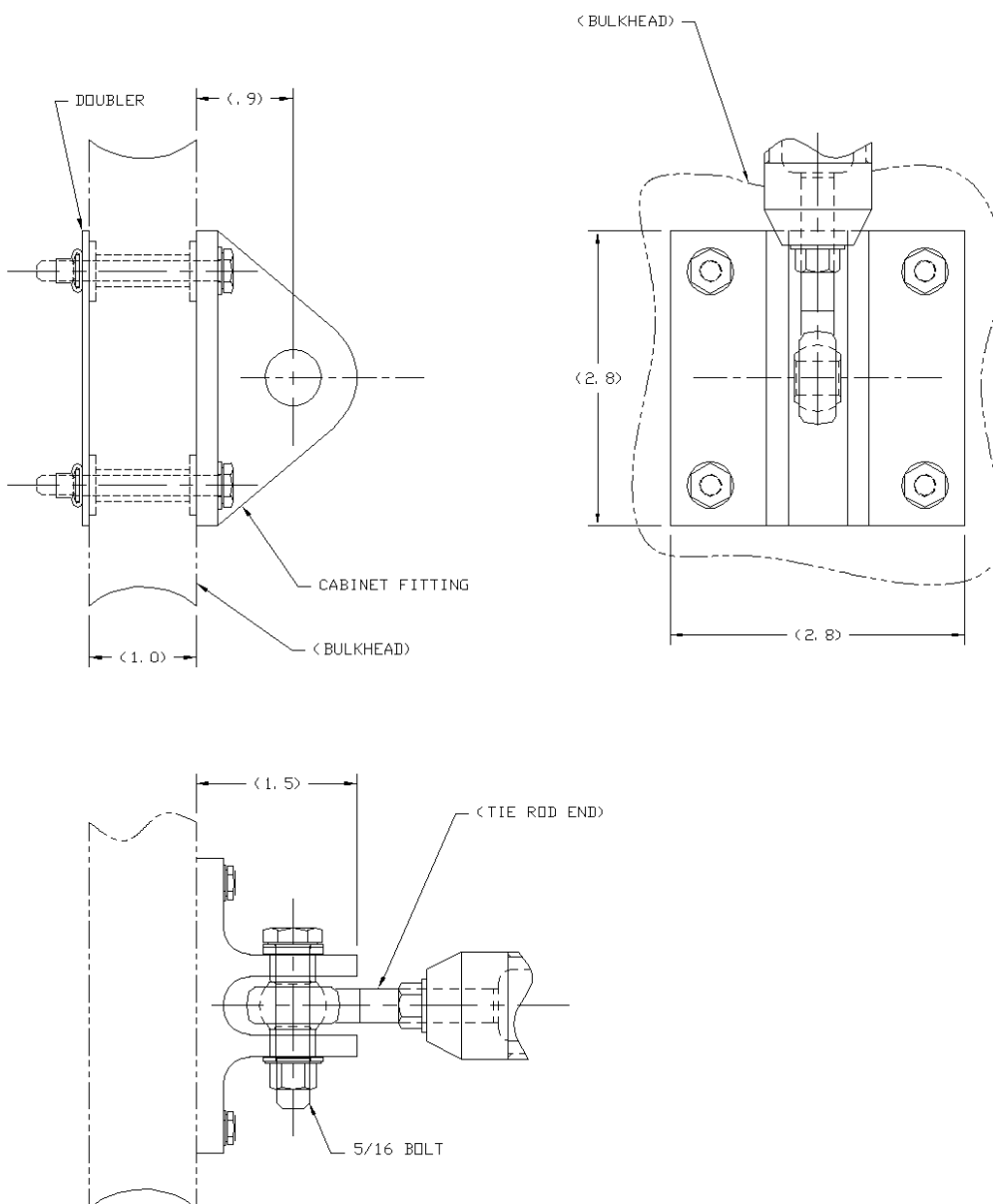
## Install Kit, Upper Partition Attach, Isolated JMCS-010-010-009



[BACK TO INDEX](#)



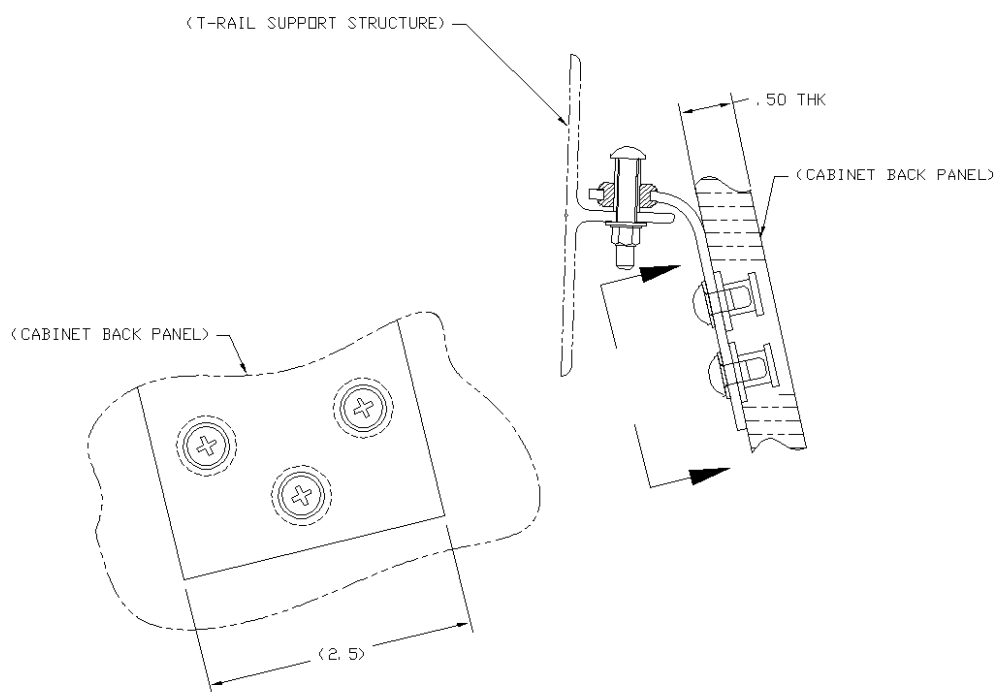
## Install Kit, Upper Partition Attach, Un-Isolated JMCS-010-010-027



[BACK TO INDEX](#)



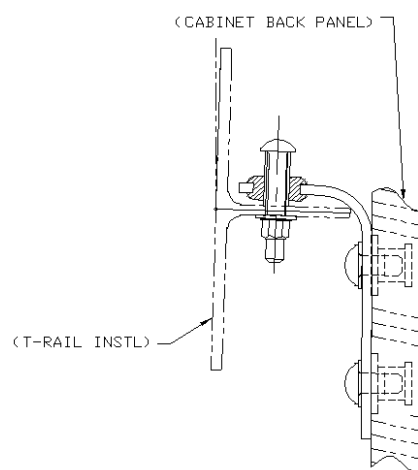
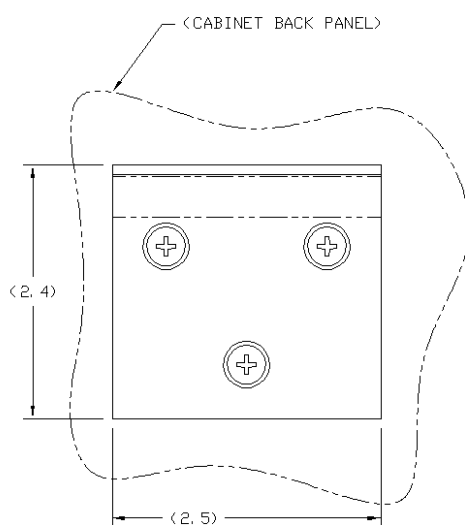
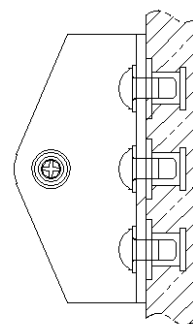
## Install Kit, T-Rail Attach (Upper Side Ledge Cabinet Attach) JMCS-010-010-013



[BACK TO INDEX](#)



## Install Kit, T-Rail Attach (Upper Side Ledge Cabinet Attach) JMCS-010-010-037

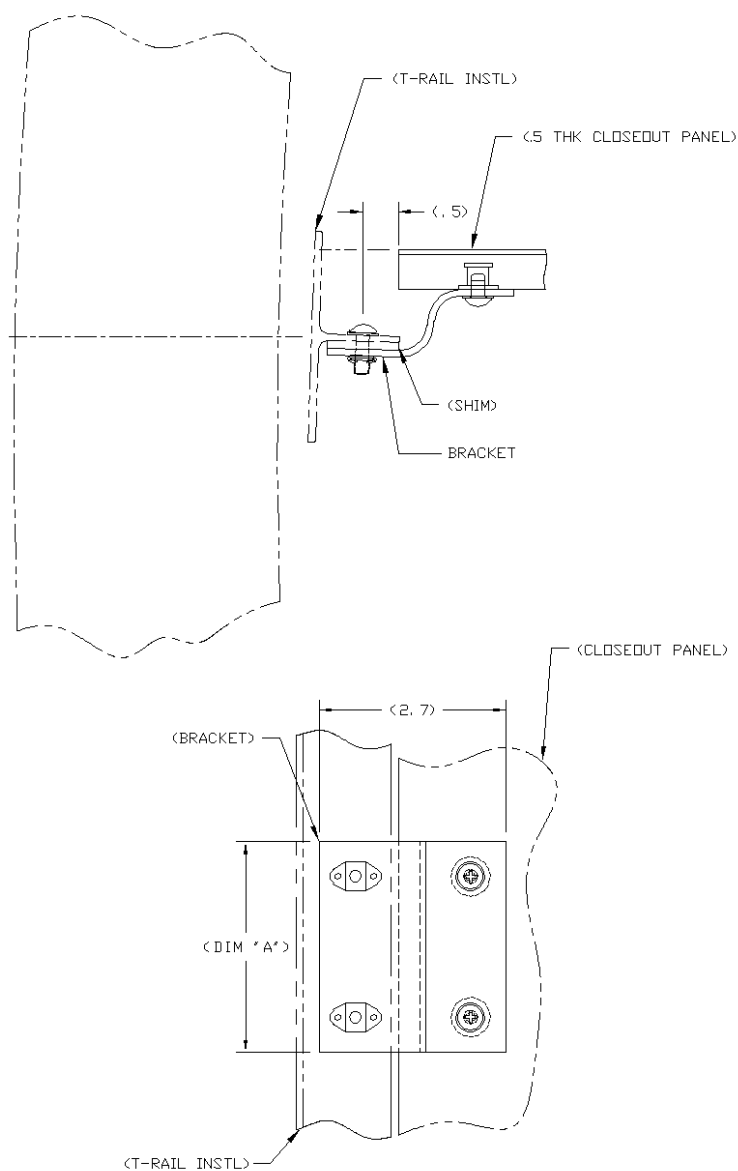


[BACK TO INDEX](#)





## Install Kit, T-Rail Attach (Upper Ledge/ Closeout Attach)

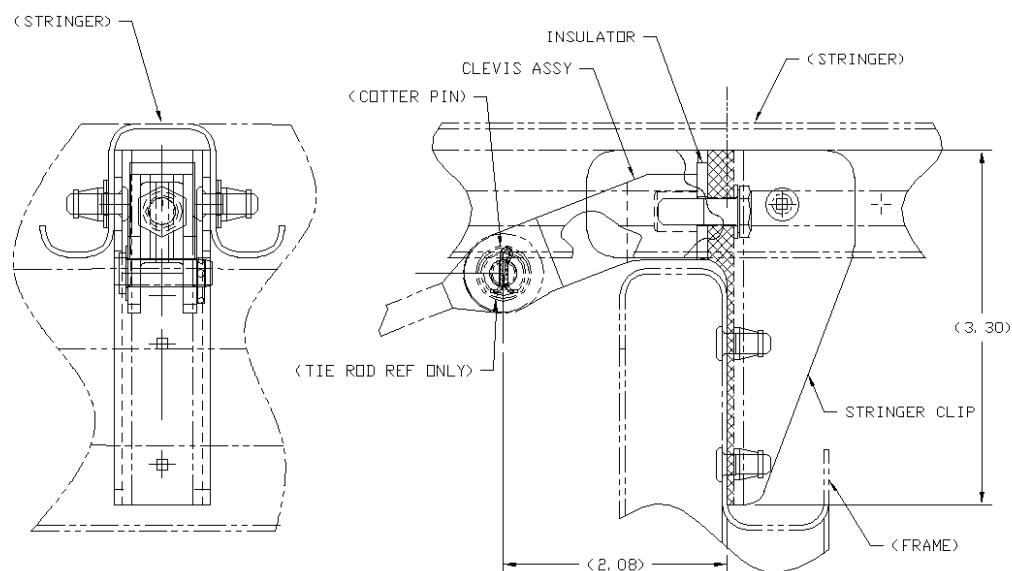


JMCS-010-010-067 INSTALL KIT, 3" DIM "A"  
JMCS-010-010-035 INSTALL KIT, 6" DIM "A"

[BACK TO INDEX](#)



## Install Kit, A/C Stringer Fitting (Forward Restraint)

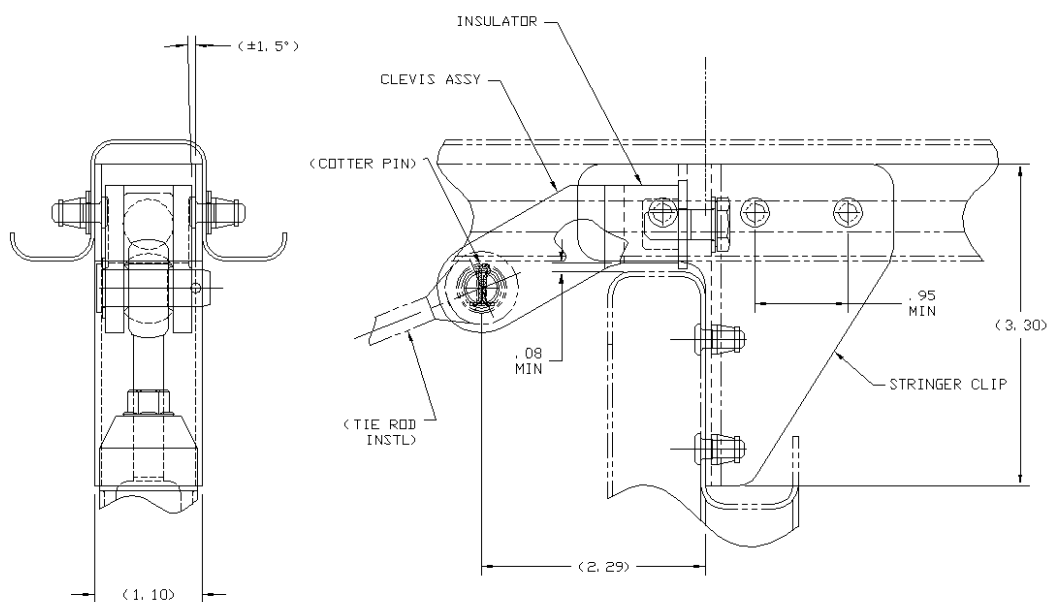
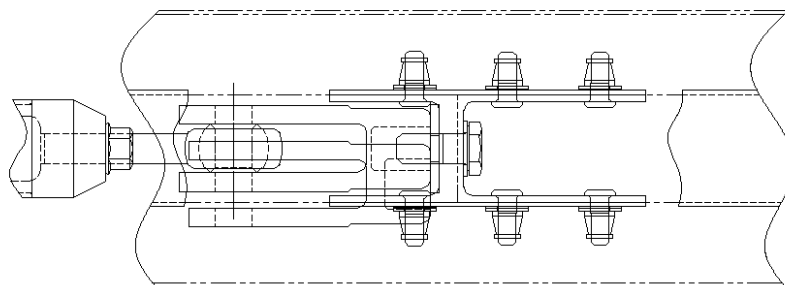


JMCS-010-010-015 INSTALL KIT, 737 Only  
JMCS-010-010-051 INSTALL KIT, 757 Only

[BACK TO INDEX](#)



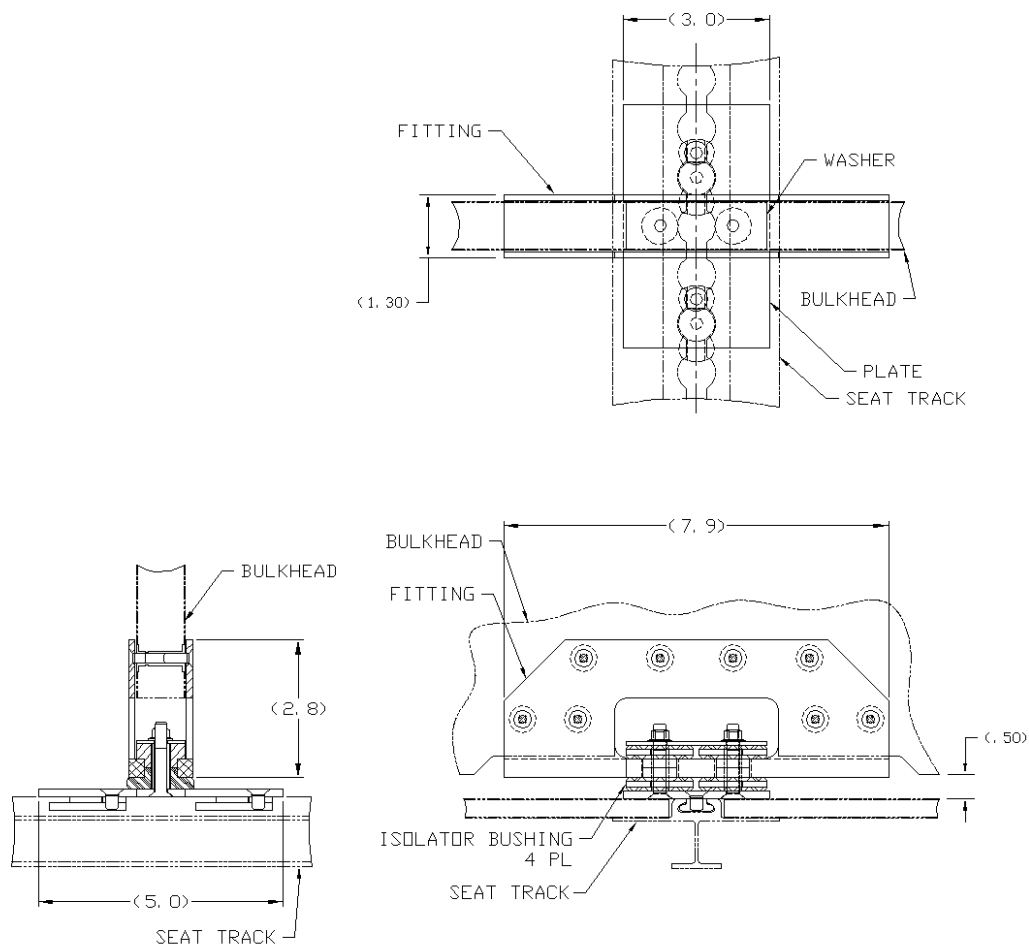
Install Kit, A/C Stringer Fitting, 757 Only High Strength (Forward Restraint)  
JMCS-010-010-053



[BACK TO INDEX](#)



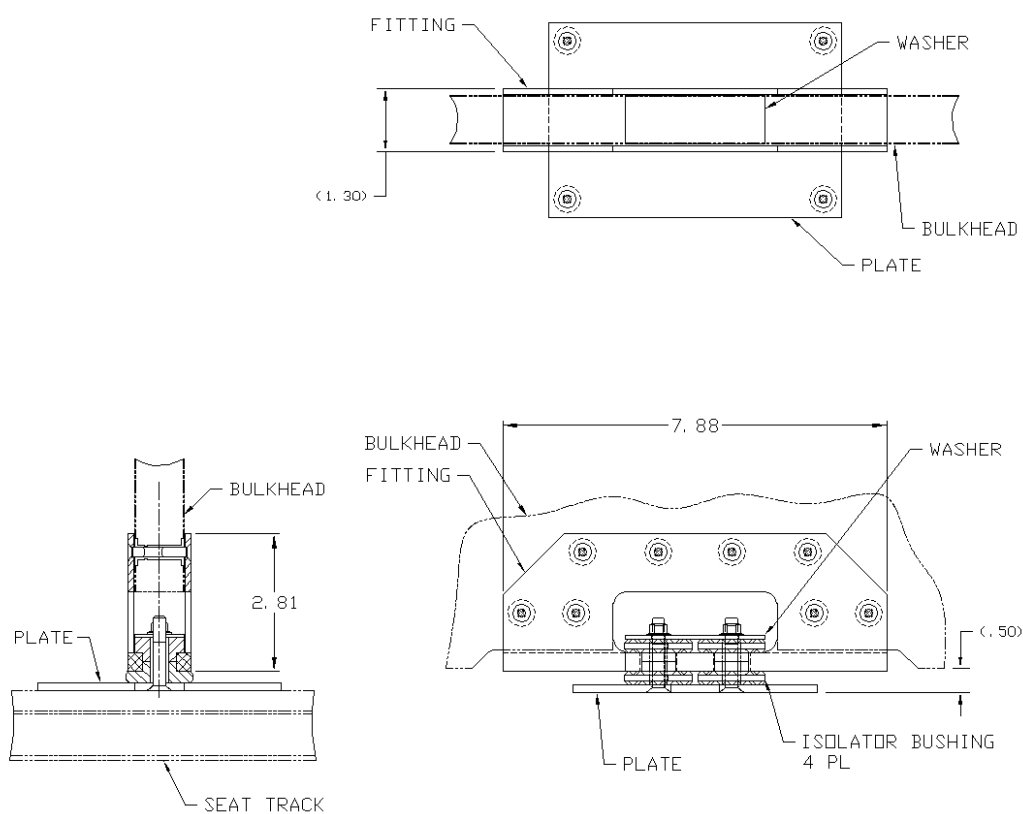
## Install Kit, Partition Seat Track Attach, Isolated JMCS-010-010-019



[BACK TO INDEX](#)



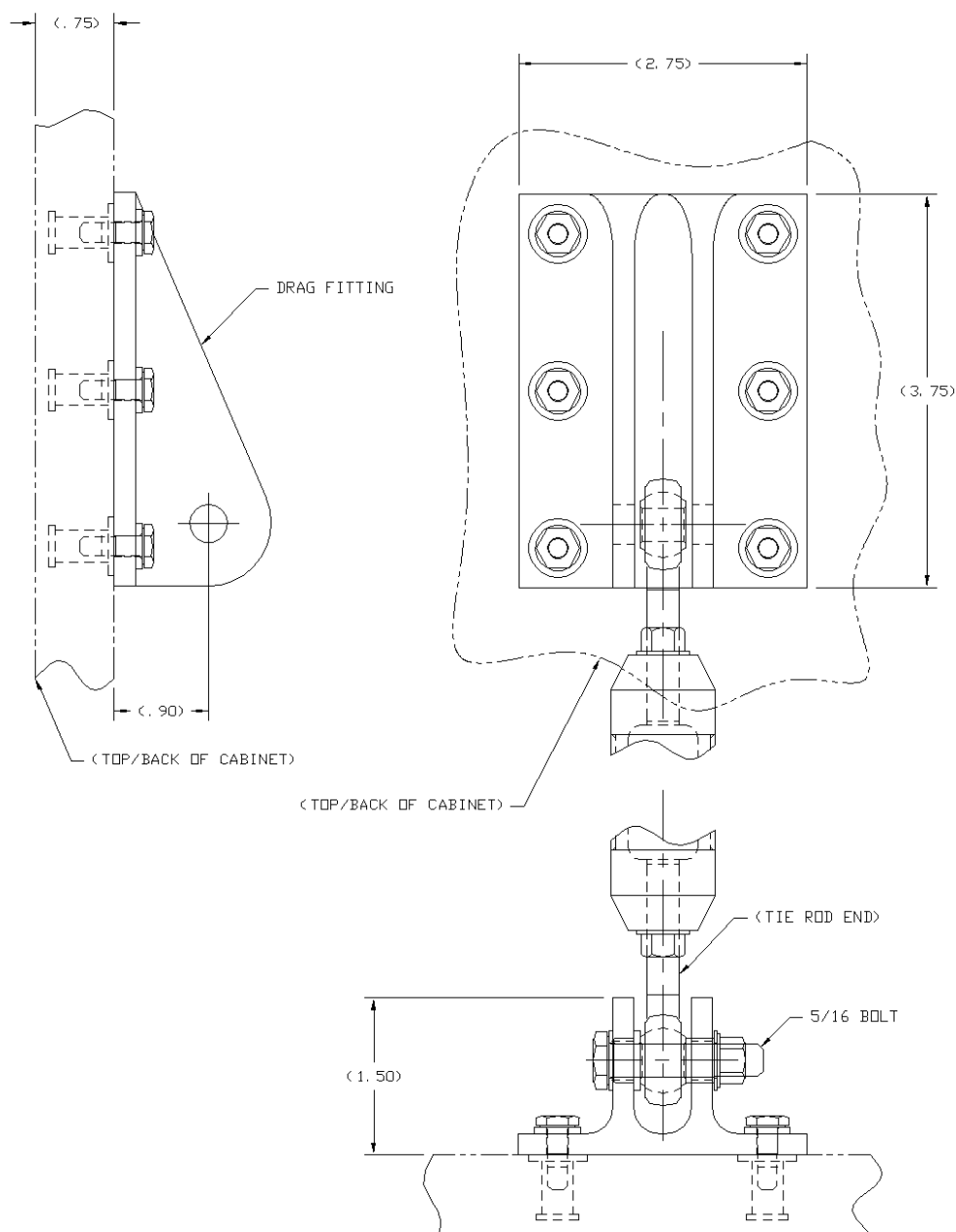
## Install Kit, Partition Floor Panel Attach, Isolated JMCS-010-010-021



[BACK TO INDEX](#)



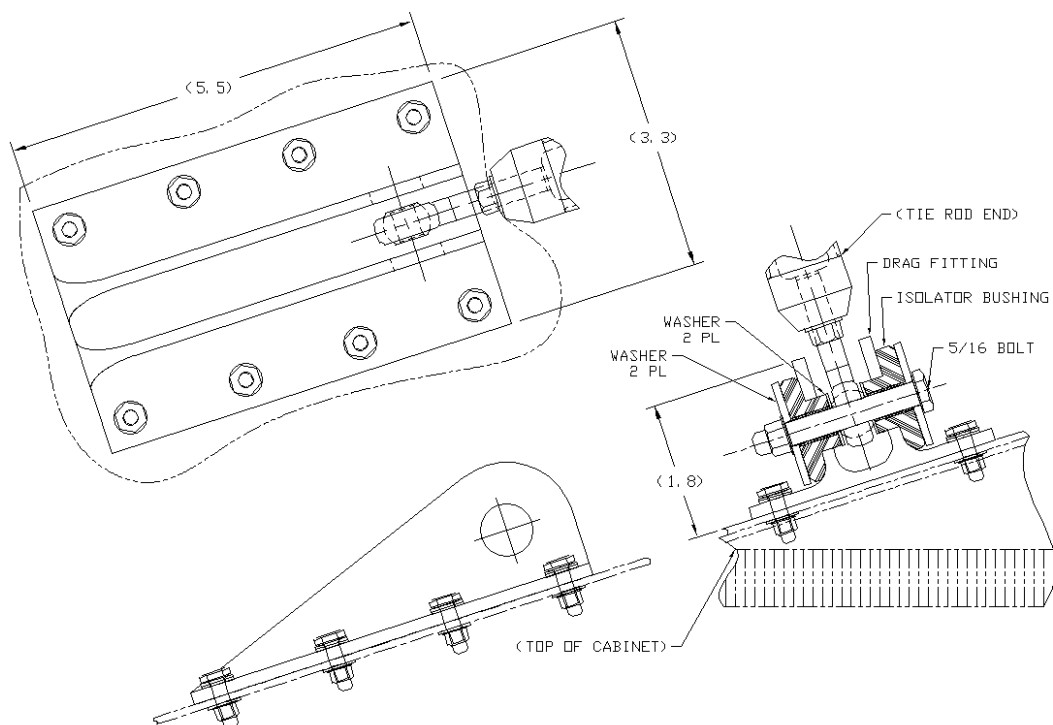
## Install Kit, Upper Cabinet Attach, Un-Isolated JMCS-010-010-023



[BACK TO INDEX](#)



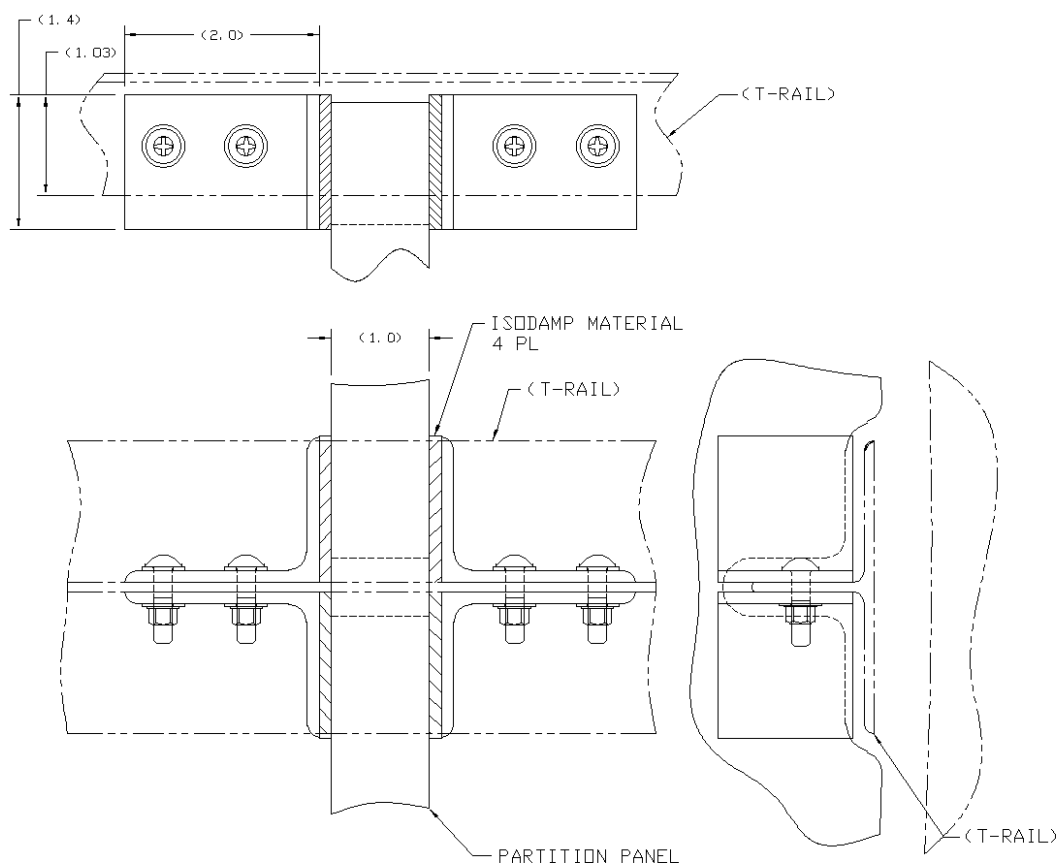
## Install Kit, Upper Cabinet Attach (Adapter Bracket, Forward Restraint) JMCS-010-010-025



[BACK TO INDEX](#)



## Install Kit, Partition Attach, Stability Constraint 1" Panel JMCS-010-010-059

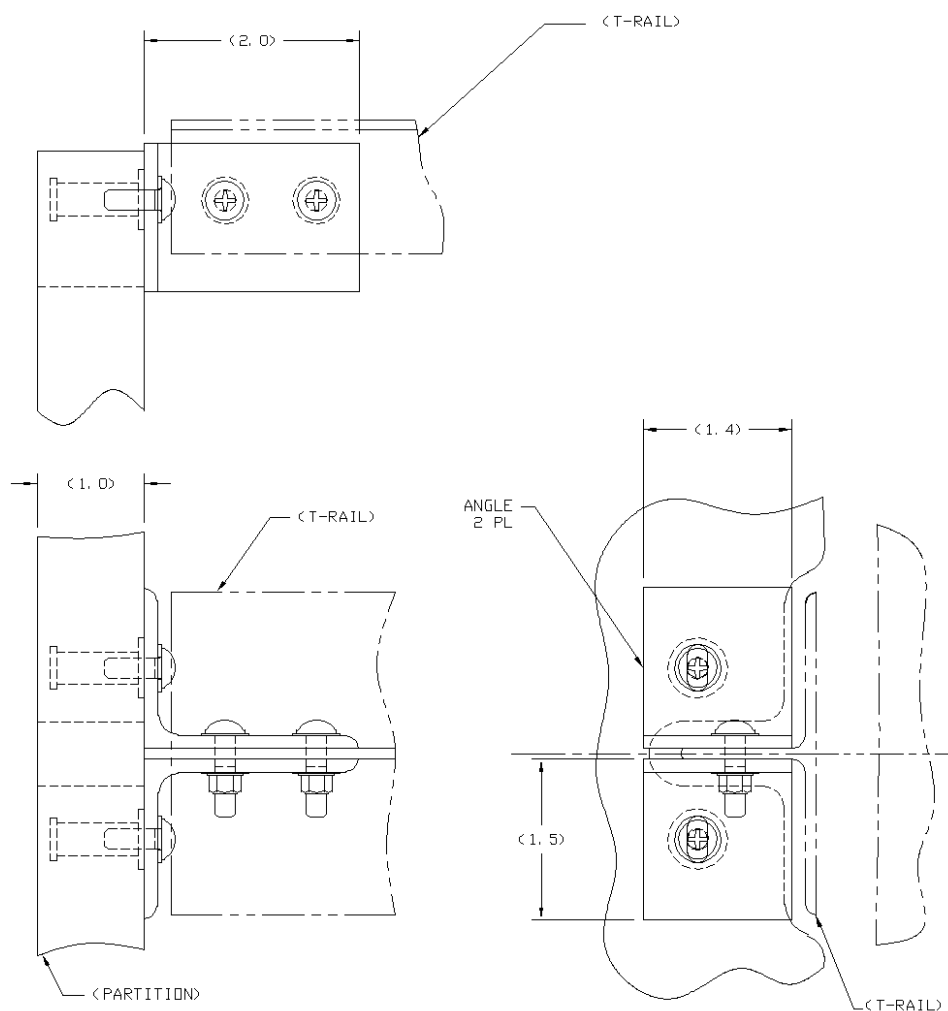


[BACK TO INDEX](#)





## Install Kit, Partition Attach, Stability Constraint 1" Panel JMCS-010-010-065



[BACK TO INDEX](#)



# CONTACT INFORMATION

**SUSAN WALL**

JORMAC AEROSPACE

11221 69<sup>th</sup> Street North  
Largo, FL 33773-5504 USA

Tel: 727-549-9600 ext 2247

Fax: 727-549-1401

Email: [Susan.Wall@Jormac.com](mailto:Susan.Wall@Jormac.com)

WWW.JORMAC.COM

**PATRICIA BARTLETT**

JORMAC AEROSPACE

11221 69<sup>th</sup> Street North  
Largo, FL 33773-5504 USA

Tel: 727-549-9600 ext 2228

Fax: 727-549-1401

Email: [Patricia.Bartlett@Jormac.com](mailto:Patricia.Bartlett@Jormac.com)

WWW.JORMAC.COM